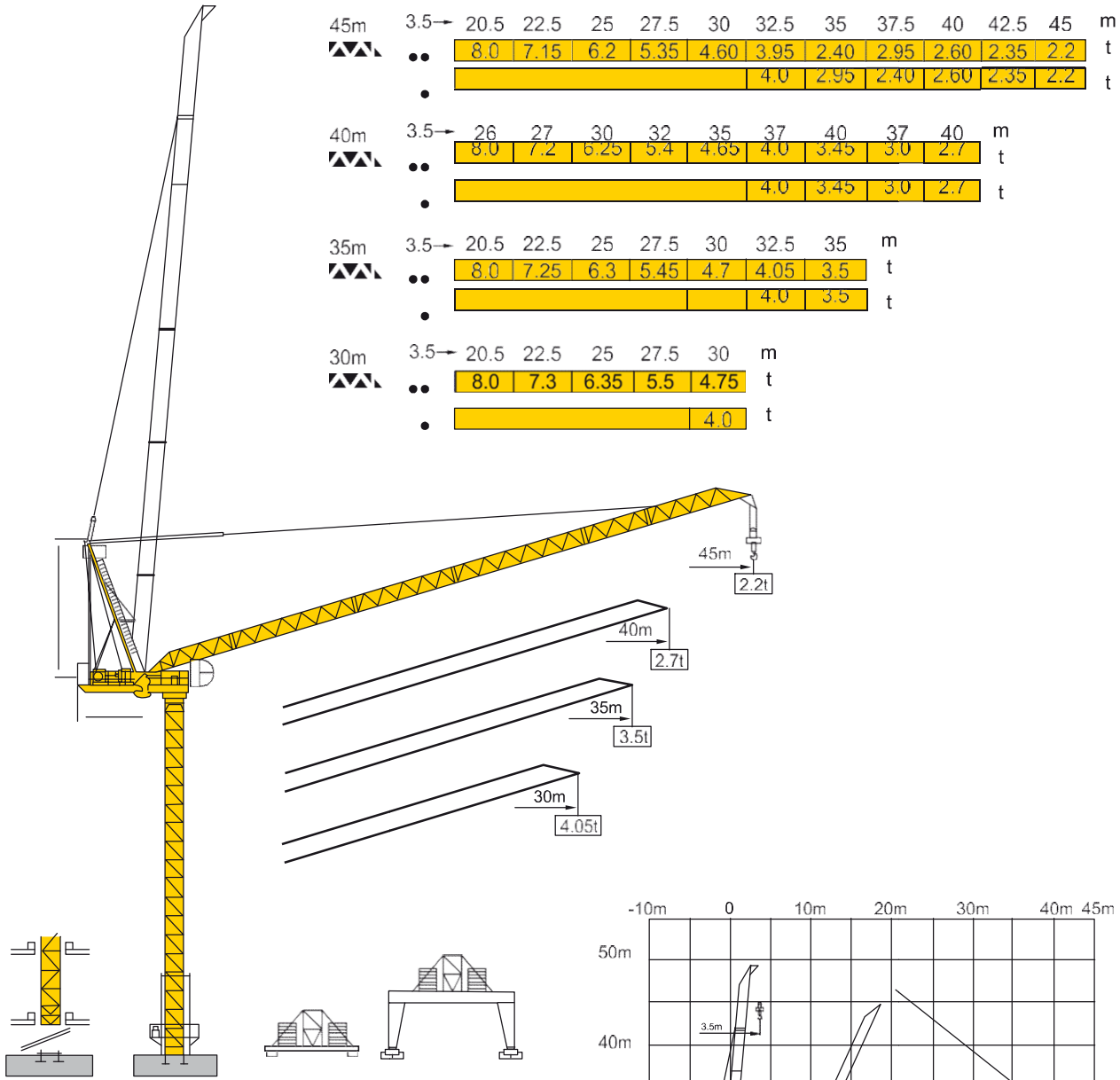
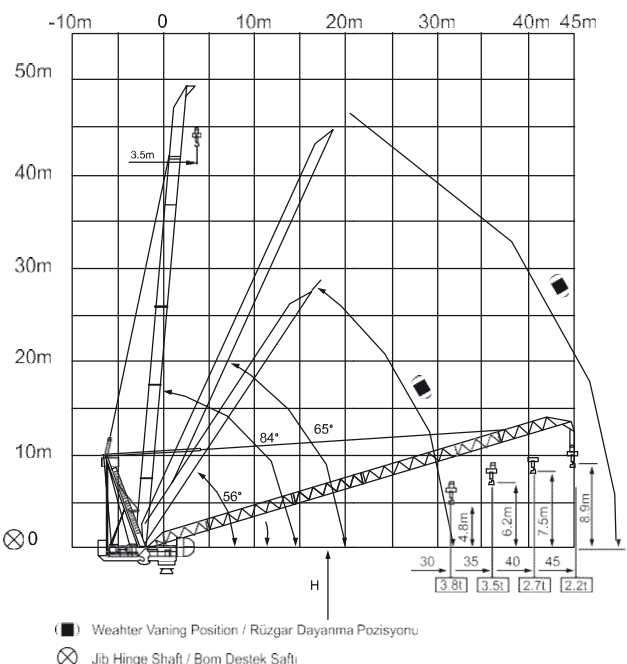


PETRA MODEL LUFFING 45/8

Load Diagrams / Yük Diyagramları



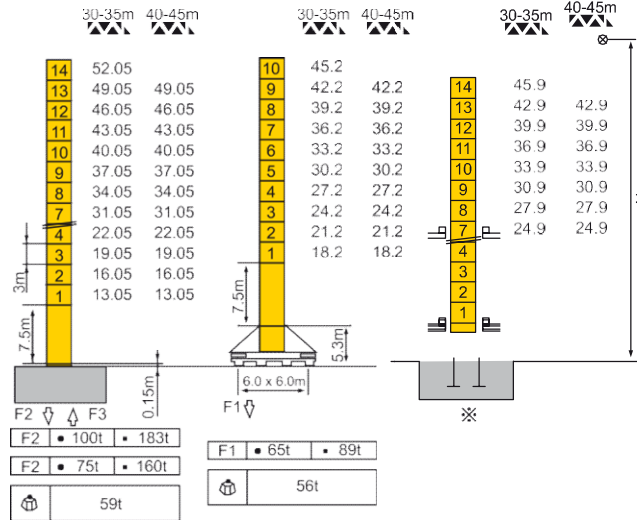
Length (m)	3.5	20.5	22.5	25	27.5	30	32.5	35	37.5	40	42.5	45	Unit
45m	8.0	7.15	6.2	5.35	4.60	3.95	2.40	2.95	2.60	2.35	2.2		t
							4.0	2.95	2.40	2.60	2.35	2.2	t
40m	8.0	7.2	6.25	5.4	4.65	4.0	3.45	3.0	2.7				t
							4.0	3.45	3.0	2.7			t
35m	8.0	7.25	6.3	5.45	4.7	4.05	3.5						t
							4.0	3.5					t
30m	8.0	7.3	6.35	5.5	4.75								t
							4.0						t



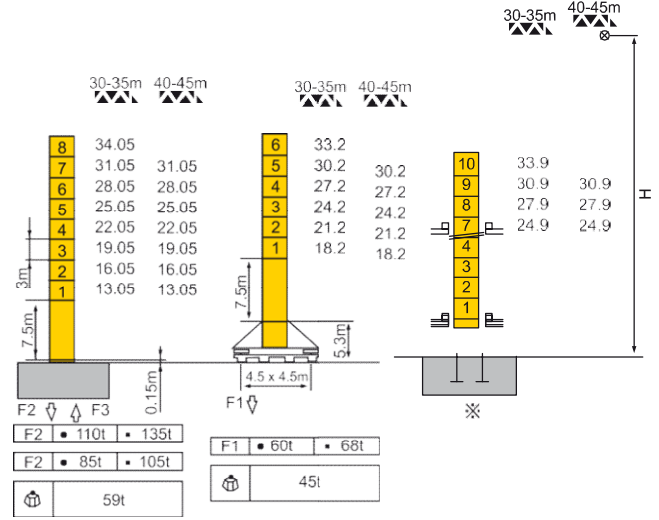
■ Weahter Vaning Position / Rüzgar Dayanma Pozisyonu
 ⊗ Jib Hinge Shaft / Bom Destek Şaftı

PETRA MODEL LUFFING 45/8

Mast: 2m x 2m



Mast: 1.6m x 1.6m




Reactions / Reaksiyonlar

- In service / Çalışır Durumda
- Out of Service / Servis Dışı

Self-Load / Kendi Ağırlığı

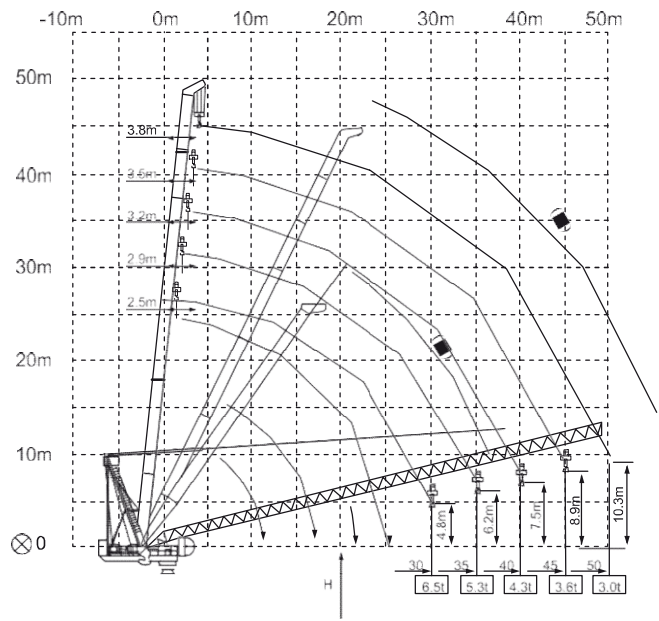
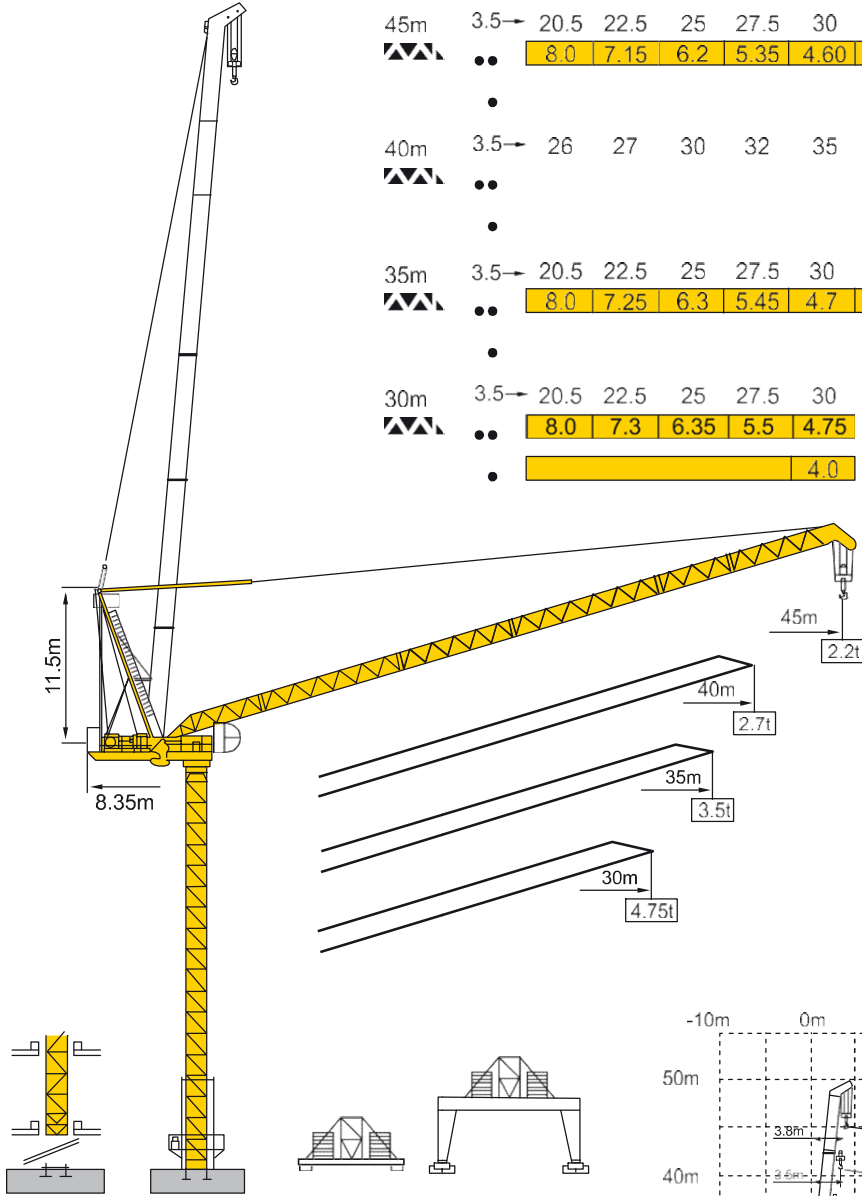
Without load and counter-weight / Yüksüz ve Kuyruk Ağırlığı
With longest jib and standart height / En Uzun Bomlu ve Standart Yükseklikte

Mechanism / Mekanizma				● ●		● ● ●			kw	
Hoisting Kaldırma	45RCS	m/min	40	80	20	40	360			
		t	4	2	8	4				
	30LVF	m/min	0-34	0-68	0-102	0-17	0-34	30	95x2Nm	
		t	4	5	1	8	4			2
	30RW	m/min	36	72	18	36	55	5.2 x 2		
		t	4	2	8	4				
Luffing	30RWA	n/min	3				55			
Slewing Dönüş	RCV95	m/min	0-0.8				95x2Nm			
Trolleying Hareketli Şaryo	RT443	m/min	15-30				5.2 x 2			
Power Supply / Güç Kaynağı				380v 50Hz / 440v 60Hz						
Necessary Electric Power / Gereken Elektrik Gücü				RCS:100KVA LVF:※						

PETRA MODEL LUFFING 50/10

Load Diagrams / Yük Diyagramları

45m	3.5	20.5	22.5	25	27.5	30	32.5	35	37.5	40	42.5	45	m
▲▲▲	●●	8.0	7.15	6.2	5.35	4.60	3.95	2.40	2.95	2.60	2.35	2.2	t
	●												t
40m	3.5	26	27	30	32	35	37	40	37	40			m
▲▲▲	●●												t
	●												t
35m	3.5	20.5	22.5	25	27.5	30	32.5	35					m
▲▲▲	●●	8.0	7.25	6.3	5.45	4.7	4.05	3.5					t
	●												t
30m	3.5	20.5	22.5	25	27.5	30							m
▲▲▲	●●	8.0	7.3	6.35	5.5	4.75							t
	●												t
													t



■ Weather Vaning Position / Rüzgar Dayanma Pozisyonu.
 ⊗ Jib Hinge Shaft / Bom Destek Şaftı

