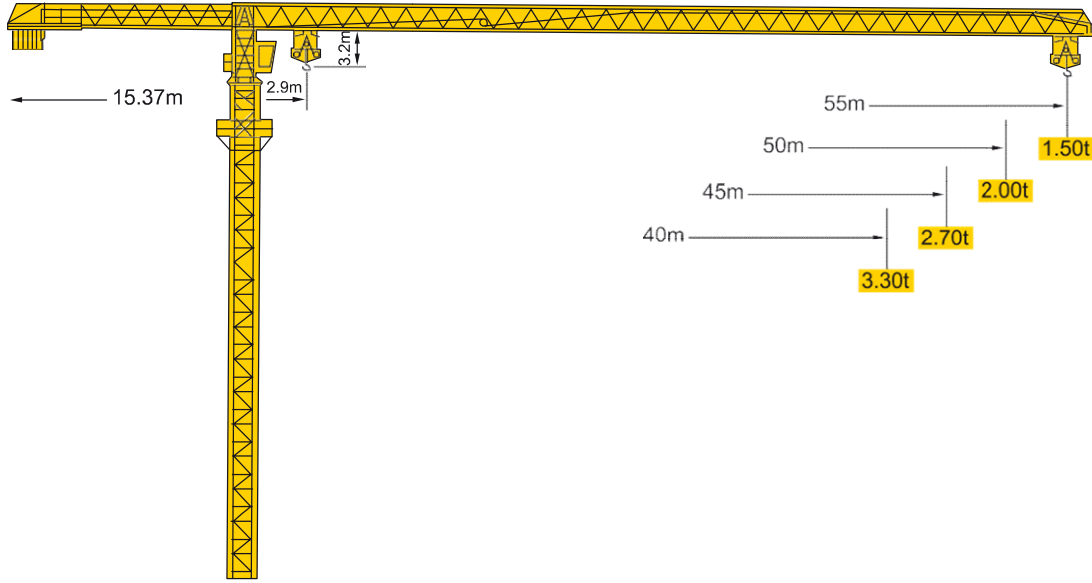






PETRA MODEL TOPLESS 55/8

Outline Dimensions / Anahat Ölçüleri



Mechanism / Mekanizma								Drum Capacity / Tambur Sarım Kapasitesi	Motor	
	33PC20	m/min	5.4	30	60	2.4	15	3.0	450m	24KW
		1	4	4	2	8	8	4		
	X96	m/min	15-38-58						95Nm	
	RCV95	m/min	0-0.7						2X95Nm	
	RT324	m/min	12.5/25						2X5.2KW	
Main Temel	380V/50Hz			60KVA						

Load Diagram / Yük Diyagramları

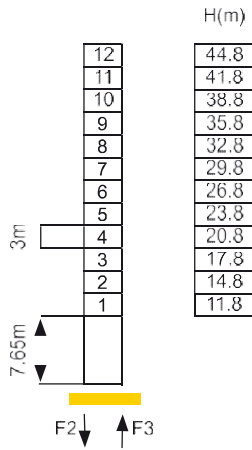
Jib m	Fall	R(Cmax) _m	C(max) _t	25	30	35	40	45	50	55
55	IV	13.34	8.00	3.85	3.10	2.65	2.15	1.90	1.60	1.35
	II	25.03	4.00	4.00	3.25	2.8	2.30	2.05	1.75	1.50
50	IV	14.69	8.00	4.36	3.50	3.00	2.47	2.18	1.85	
	II	27.67	4.00	4.00	3.65	3.15	2.62	2.33	2.00	
45	IV	16.51	8.00	5.01	4.05	3.49	2.87	2.55		
	II	31.25	4.00	4.00	4.00	3.64	3.02	2.70		
40	IV	17.80	8.00	5.46	5.46	3.83	3.15			

PETRA MODEL TOPLESS 55/8

Mast 1.6m x 1.6m

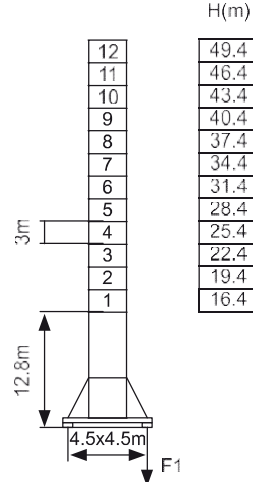
Reactions / Reaksiyonlar

Stationary / Sabit



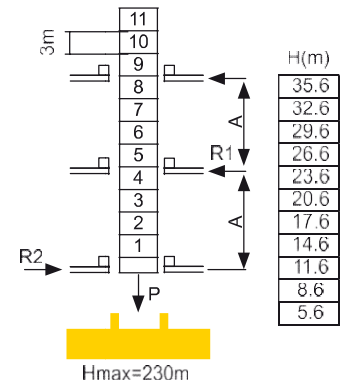
F2	● 98t	■ 118t
F3	● 66t	■ 92t
Person	42t	

Travelling / Hareketli



F1	● 70t	■ 89t
Person	50t	

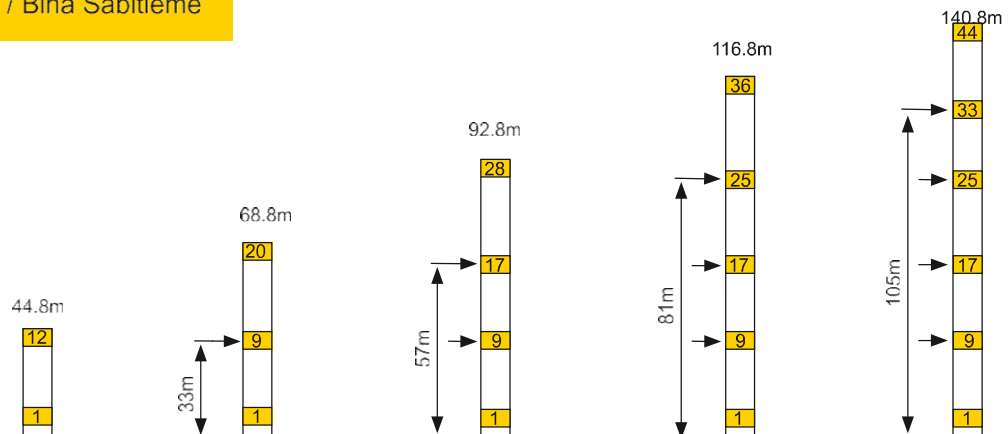
Internal Climbing / Bina İçi Tırmanma



	7m	11m
R1	18.7t	
R2	16.7t	
	63.5t	
P	41t	

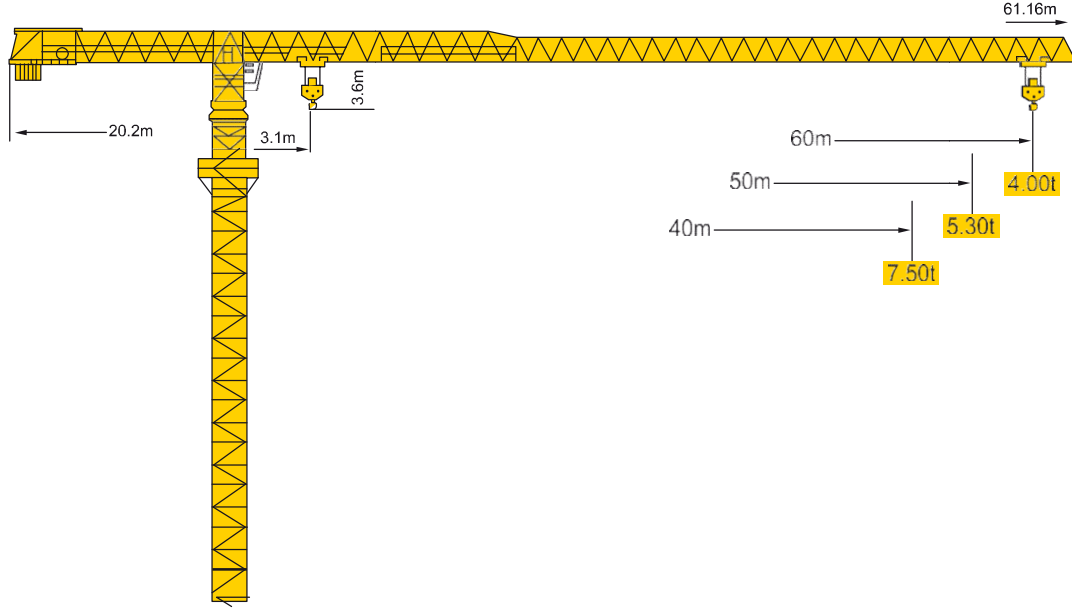
- : In service / Çalışır Durumda
- : Out of Service / Servis Dışı
- Person : Without load and ballast with longest jib and maximal height / En uzun bomlu ve maksimum yükseklikte yüksüz ve dengeli





Anchorage / Bina Sabitleme



PETRA MODEL TOPLESS 55/8

Outline Dimensions / Anahat Ölçüleri

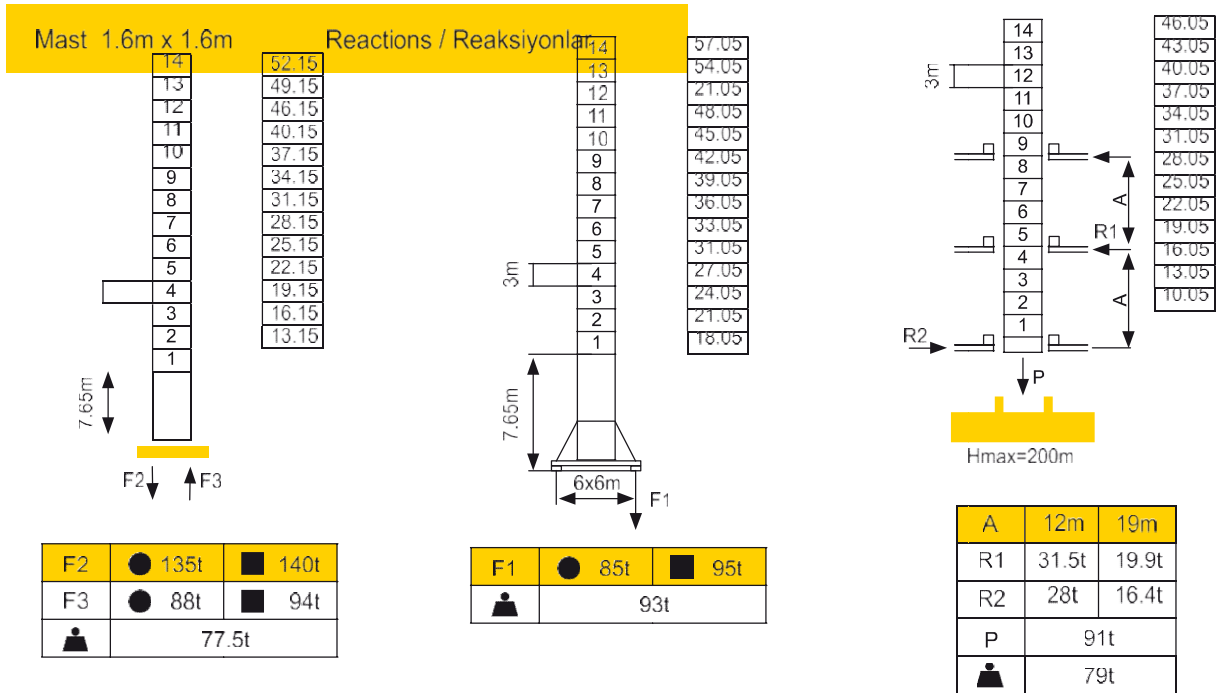


Mechanism / Mekanizma						Drum Capacity / Tambur Sarım Kapasitesi	Motor	
	70RC30	m/min	40	80	20	40	550m	51.5KW
		t	6.00	3.00	12.0	6.00		
	X120	m/min	15-38-58				95Nm	
	RCV145	m/min	0-0.7				2X145Nm	
	RT443	m/min	12.5/25				4X1.7/3.4KW	
Main Temel	380V/50Hz		90KVA					

Load Diagram / Yük Diyagramları

Jib m	Fall	R(Cmax) m	C(max) t	30	34	40	44	50	54	60
60	IV	22.1	12.0	8.37	7.19	5.84	5.40	4.73	4.32	3.80
	II	42.0	6.00	6.00	6.00	6.00	5.69	4.93	4.52	4.00
50	IV	23.2	12.0	8.88	7.64	6.26	5.62	5.10		
	II	44.8	6.00	6.00	6.00	6.00	6.00	5.30		
40	IV	26.4	12.0	10.3	8.93	7.50				
	II	40.0	6.00	6.00	6.00	6.00				

PETRA MODEL TOPLESS 60/12



184.15m

172.5m