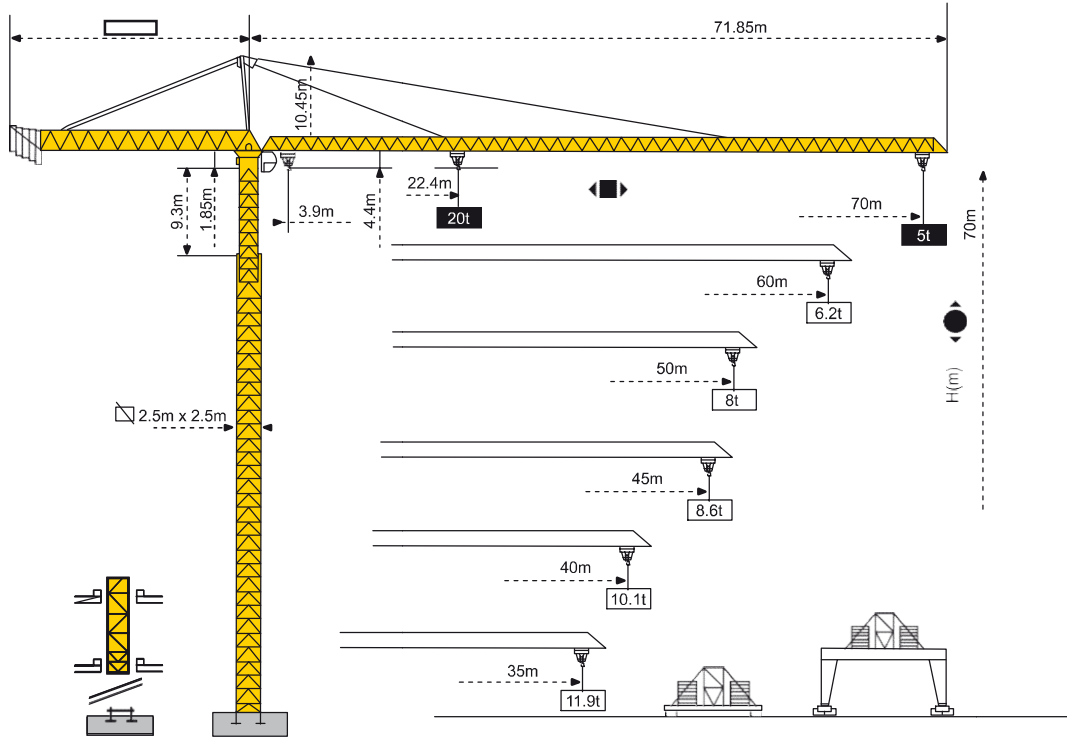


# PETRA MODEL PT 70/20

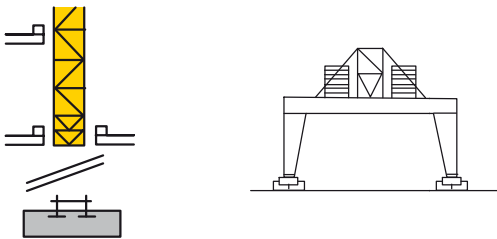
## Outline Dimensions / Anahat Ölçüleri



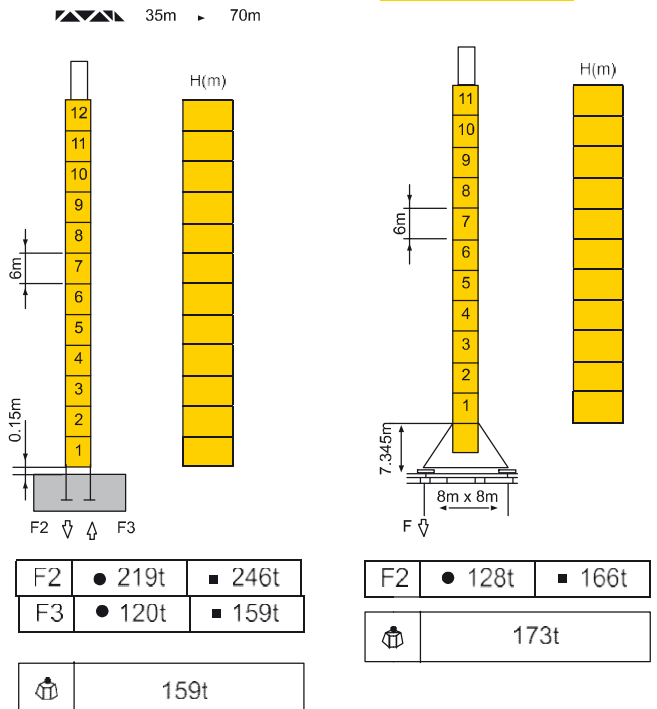
Reactions / Reaksiyonlar	● In service / Çalışır Durumda	▲ Self-Load / Kendi Ağırlığı	Without load and counter-weight / Yüksüz ve Kuyruk Ağırlığı
	■ Out of Service / Servis Dışı		With longest jib and standart height / En Uzun Bomlu ve Standart Yükseklikte

### Mast: 2m x 2m

### Mounting Possibilities / Kaldırma Olasılıkları

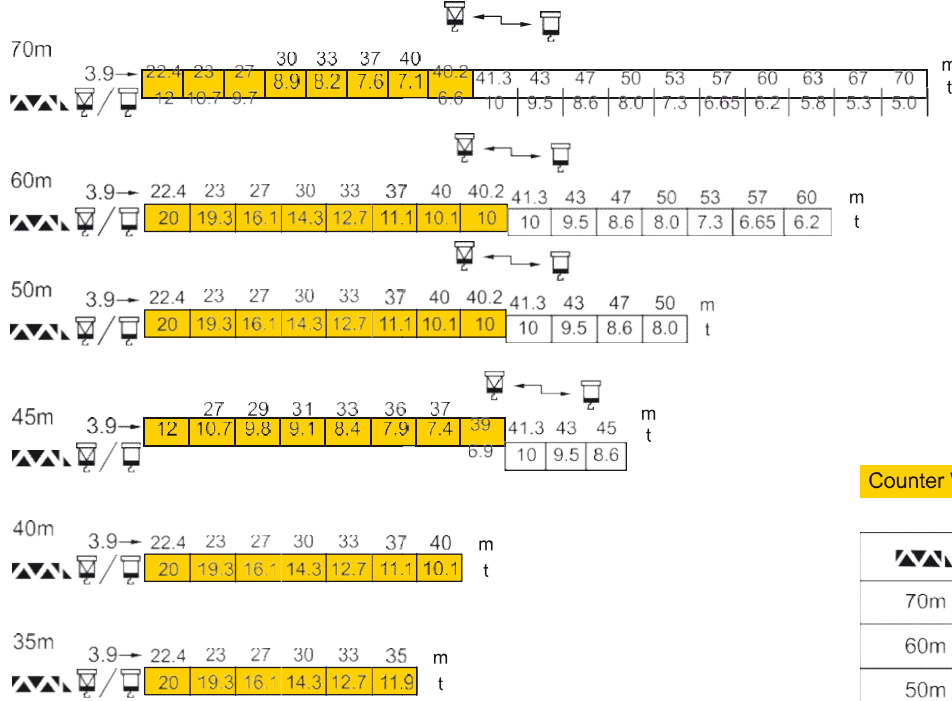


※ Consult us  
Bize Danışın



## PETRA MODEL PT 70/20

### Load Diagrams / Yük Diyagramları



### Counter Weight / Kuyruk Ağırlığı

		(kg)
70m	25.4m	25000
60m	25.4m	21600
50m	25.4m	18200
45m	25.4m	14900
40m	25.4m	13200
35m	25.4m	11600

Standard Şaryo 2/4 Eşim  
Standard trolley 2/4 fall

Mechanisma Specification														
Hoisting Kaldırma		90LVF 50	m/min	0-40	0-80	0-120	0-20	0-40	0-60	600	90			
		t	10	5	2.5	20	10	5						
		132LVF 50	m/min	0-60	0-120	0-180	0-30	0-60	0-90	600* >600	132	Optional Winch / Opsiyonel Vinç		
		t	10	5	2.5	20	10	5						
Trolleying Hareketli Şaryo		9.2TVF	m/min	0 - 55							9.2			
		8DPC8	m/min	13.5 / 42 / 84										2.6/7.5/9
Slewing Dönüş		145 SVT	n/min	0 - 0.6							145Nmx2			
Travelling Hareketli		5.5TRVF	m/min	0 - 30							5.5 x 6			
Power Supply / Güç Kaynağı				380V 50 Hz / 440V 60Hz										
Necessary Electric Power / Gereken Elektrik Gücü				90LVF : 155KVA										
Other Form Hoisting / Diğer Kaldırma Formları				75LVF 115KVA 70RCS 90KVA										