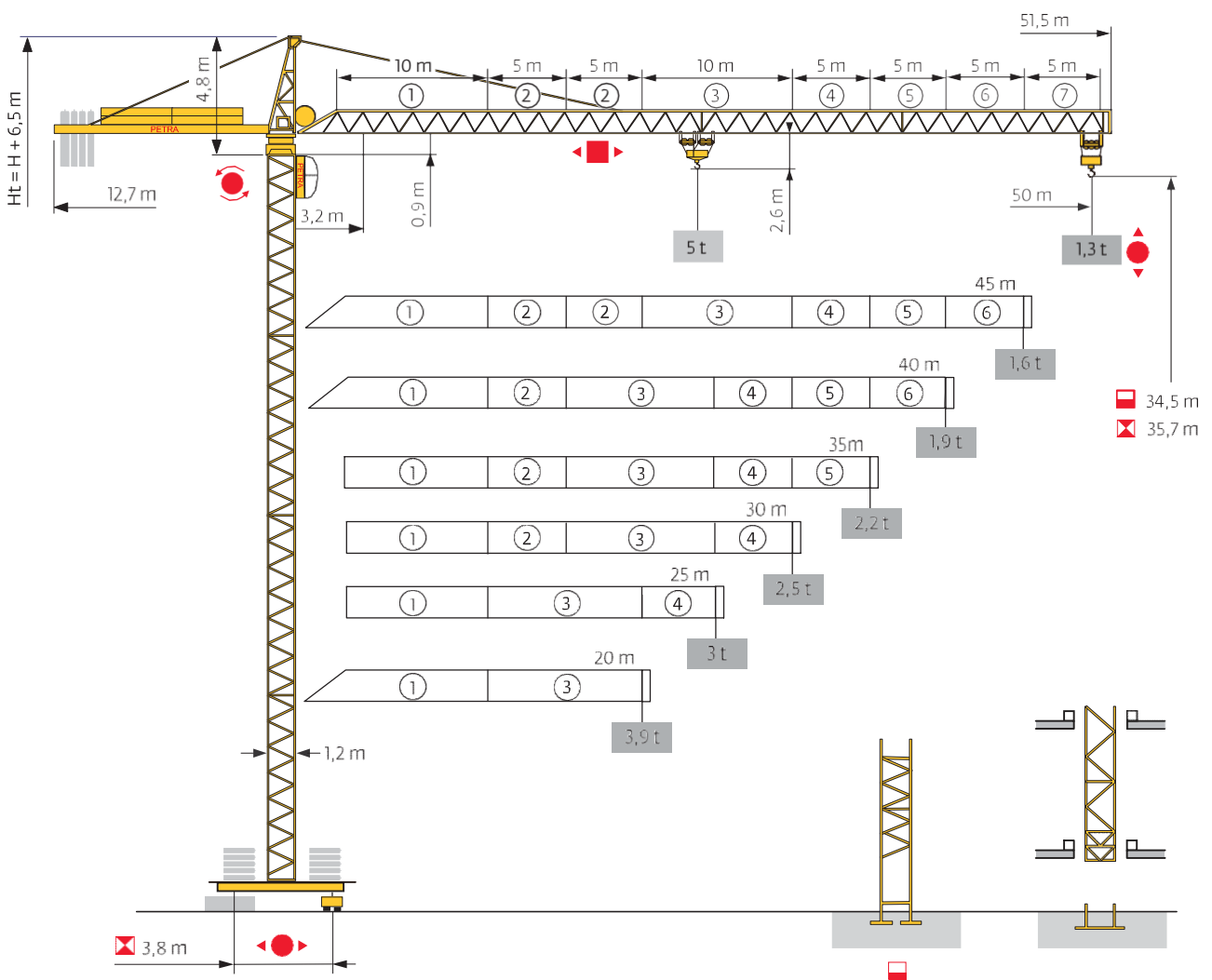
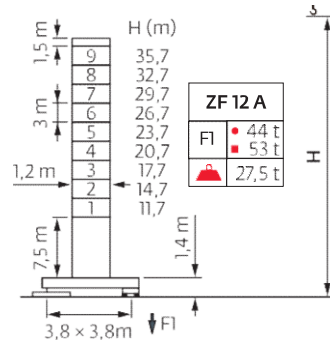
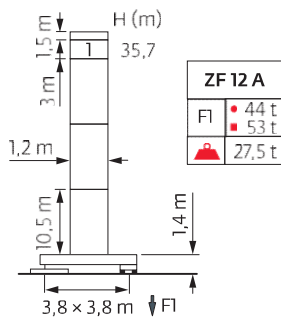
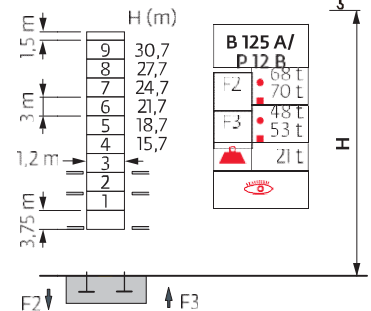
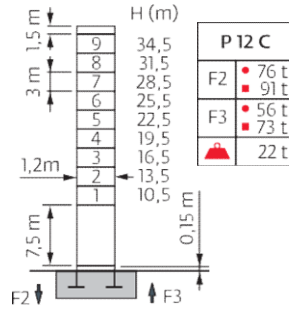
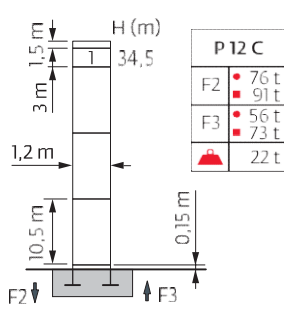


PETRA MODEL PT 5013/5

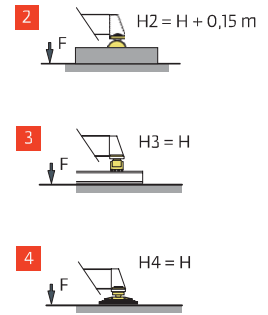


Mât - Réactions / Mast - Reaktionskräfte / Mast - Reactions / Mástil - Reacciones / Torre - Reazioni
 Tramo - Reações / Реакция опор мачты

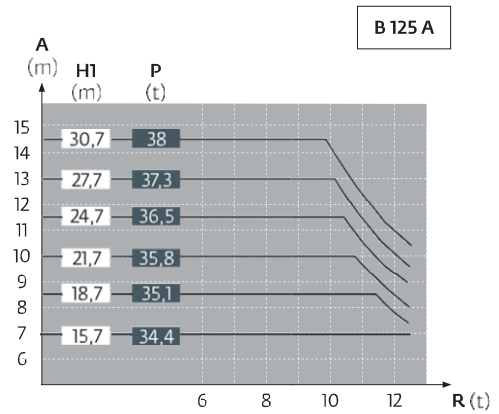
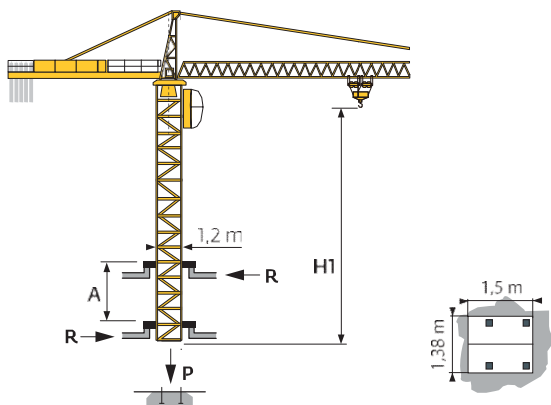
1,2 m
 20 m → 50 m



ZF

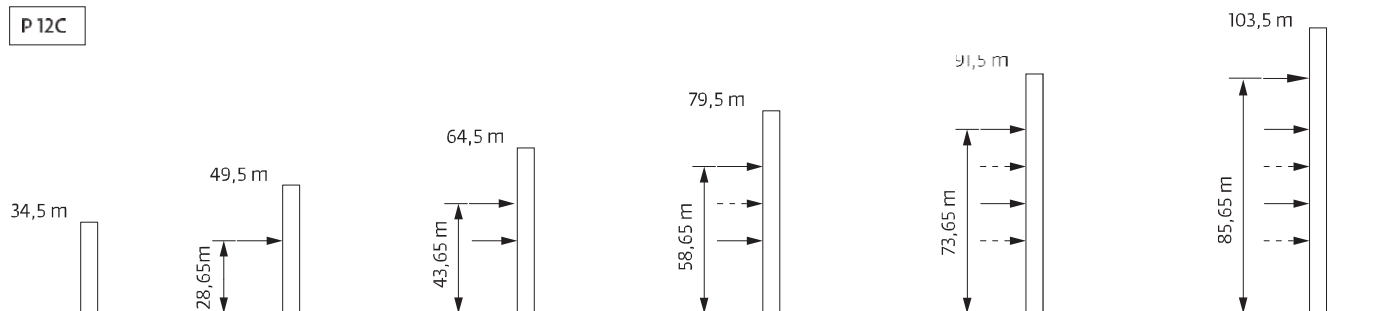


Télescopage sur dalles / Kletterkrane im Gebäude / Climbing Crane / Telescopage grua trepadora / Gru in cavedio
 Telescopagem sobre lajes / Кран, ползущий внутри здания



Ancrages / Verankerungen / Anchorages / Anclajes / Ancoraggi
 Ancoragem / Анкера

P 12C

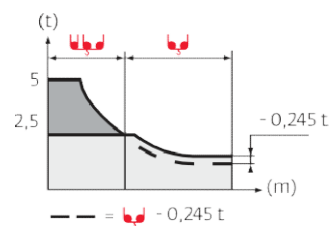


H > 103,5m




Courbes de charges / Lastkurven / Load curves / Curvas de cargas / Curve di carico
 Curvas de carga / Кривые нагрузок





50 m	3,2	▶	15	17	20	22	25	26,7	28,9	30	32	35	37	40	42	45	47	50	m
			5	4,3	3,6	3,2	2,7	2,5	2,5	2,4	2,2	2	1,9	1,7	1,6	1,5	1,4	1,3	t
									2,5	2,4	2,2	2	1,9	1,7	1,6	1,5	1,4	1,3	t
45 m	3,2	▶	16	17	20	22	25	27	28,4	30,8	32	35	37	40	42	45			m
			5	4,6	3,8	3,4	2,9	2,65	2,5	2,5	2,4	2,2	2	1,85	1,75	1,6			t
									2,5	2,4	2,2	2	1,85	1,75	1,6				t
40 m	3,2	▶	16,4	17	20	22	25	27	29,1	31,6	32	35	37	40					m
			5	4,8	3,9	3,5	3	2,75	2,5	2,5	2,45	2,2	2,1	1,9					t
									2,5	2,45	2,2	2,1	1,9						t
35 m	3,2	▶	16,4	17	20	22	25	27	29,1	31,6	32	35							m
			5	4,8	3,9	3,5	3	2,75	2,5	2,5	2,45	2,2							t
									2,5	2,45	2,2								t
30 m	3,2	▶	16,3	17	20	22	25	27	30										m
			5	4,8	3,9	3,5	3	2,75	2,4										t
									2,5										t
25 m	3,2	▶	16,3	17	20	22	25												m
			5	4,8	3,9	3,5	3												t
									2,5										t
20 m	3,2	▶	16,3	17	20														m
			5	4,8	3,9														t
									2,5										t



Lest de base / Grundballast / Base ballast / Lastre de base / Zavorra di base
 Lastro da base / Базовый Балласт

 1,2 m	ZF 12 A	H (m)	35,7	34,2	32,7	31,2	29,7	28,2	26,7	25,2	23,7	22,2	20,7	19,2	17,7	16,2	14,7	13,2	11,7
		 (t)	45	45	45	45	40	40	40	40	40	40	35	35	35	35	35	35	35

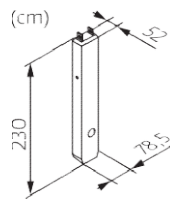
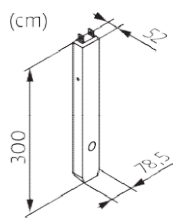
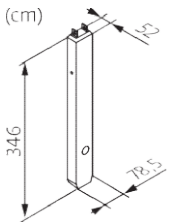
Lest de contre-flèche / Gegenauslegerballast / Counter-jib ballast / Lastre de contra-flecha / Zavorra di controbraccio
 Lastro da contra lança / Противовес стрелы

	3400 kg	2950 kg	2250 kg	 (kg)
50 m	2	2	0	12.700
45 m	2	2	0	12.700
40 m	1	1	2	10.850
35 m	2	1	0	9.750
30 m	2	0	1	9.050
25 m	0	1	2	7.450
20 m	2	0	0	6.800

CG - 3400 kg

CP - 2950 kg

CM - 2250 kg



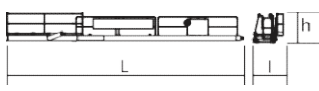
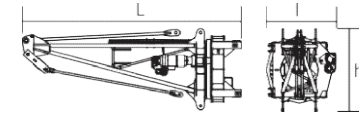
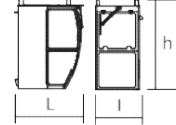
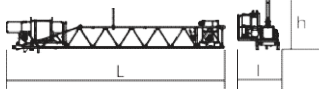
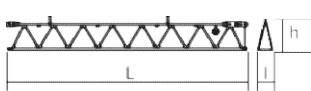
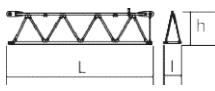
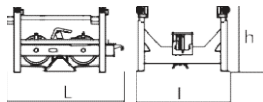
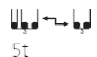
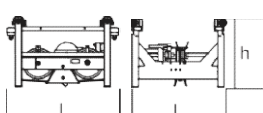
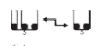

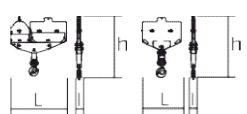


Encombrement et poids / Abmessungen und Gewicht / Dimensions and weight / Dimensiones y peso / Ingombro e peso
dimensões e pesos / габаритные размеры и вес

Partie tournante / Drehender Kranteil / Slewing crane part / Parte giratoria





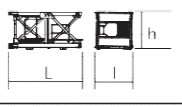

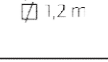
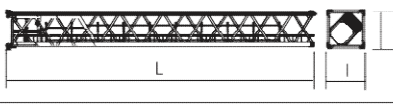
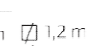
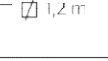
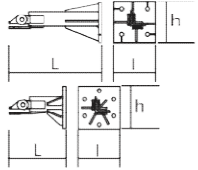
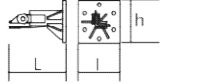
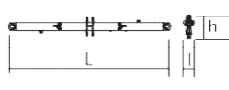
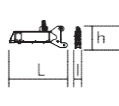
Parte rotante / Parte rotativa / Поворотная часть :  50 m -  -  -  25 PC13 / 40 LVF13








 x 3



 x 3








Partie tournante / Drehender Kranteil / Slewing crane part Parte giratoria / Parte rotante / Parte rotativa Поворотная часть	L (m)	l (m)	h (m)	kg (+/- 5%)	
Contre-flèche / Gegenausleger Counter-jib / Contra-flecha Controbraccio / Contra-lança Контр-стрела		11,83	1,25	1,45	1825
Porte-flèche / Auslegerträger Cathead / Porta-flecha Cuspide / Suporte de lança Оголовок		4,83	1,55	1,78	2640
Cabine / Kabine Cab / Cabina Cabina / Cabina Кабина	 Smartview	1,68	1,18	2,31	385
Elément de flèche / Auslegerelement Jib section / Elemento de flecha Elemento di braccio / Elemento de lança Секция стрелы	 ① 25 PC13 40 LVF13	10,2 10,2	1,81 1,81	1,68 1,52	1315 1505
Elément de flèche / Auslegerelement Jib section / Elemento de flecha Elemento di braccio / Elemento de lança Секция стрелы	 ④	10,2	0,8	1,09	1080
Elément de flèche / Auslegerelement Jib section / Elemento de flecha Elemento di braccio / Elemento de lança Секция стрелы	 ② ③ ⑤ ⑥ ⑦ ⑧	5,23 5,23 5,18 5,18 5,18 5,18	0,8 0,8 0,8 0,8 0,8 0,8	1,07 1,07 1,05 1,05 1,05 1,05	520 520 375 375 255 250
Chariot / Laufkatze Trolley / Carrello Carro / Carro-distribuidor Тележка	  5t	1,24	1,01	0,71	185
Chariot / Laufkatze Trolley / Carrello Carro / Carro-distribuidor Тележка	  5t  2,5t	1,14 1,14	1,01 1,01	0,71 0,71	175 175
Moufle / Hubflasche Pulley block / Aparejo Bozzello / Cadernal Полиспаht	  5t  2,5t	1,09 0,74	0,2 0,14	1,38 1,17	280 150


Equipement de télescopage / Teleskopierüstung / Telescoping equipment
 Equipo de telescopaje / Equipaggiamento di telescopaggio / Equipamento de telescopagem
 Оборудование для телескопирования

Cage de télescopage / Teleskopwagen Telescopic cage / Jaula de telescopaje Gabbia di telescopaggio / Gaiola de telescopagem для телескопирования крана			6,3	3,61	3,63	1980
Mâtire / Mastwerk / Masts Mástil / Torre / Coluna Мачты						
SR 24 J			7,7	1,29	1,26	1735
S 24C1 S 24C2		 	3,2	1,29	1,26	770
			3,2	1,29	1,26	815
S 24 E SR 24 E		 	10,4	1,26	1,26	2185
			10,4	1,26	1,26	2190
Bases / Kranbasen / Crane bases Bases / Basi / Bases фундамент под кран						
Pieds de scellement / Verankerungsfüße Fixing angles / Pie de empotramiento Montante da annegare / Angulos fixadores анкера		P 12C	1,1	0,5	0,5	170
		R 12C	0,68	0,5	0,5	145
Bras de croix / Fundamentkruzträger Cross girder / Brazo en cruz Braccio croce / Braço da cruz Поперечная балка		ZF 12A	5,64	0,67	1,4	1540
1/2 Bras de croix / 1/2 Fundamentkruzträger 1/2 Cross girder / 1/2 Brazo en cruz 1/2 Braccio croce / 1/2 Braço da cruz 1/2 Поперечная балка		ZF 12A	2,98	0,4	1,41	895
			2,98	0,43	1,41	925

400 V - 50 Hz													hp	kW 
	25 PC 13 (GH)	m/min	9	35,5	71	4,4	177	35,4	25	18,5	360 m			
		t	2,5	2,5	1,3	5	5	2,6						
	25 PC 13	m/min	6,6	33	66	3,3	16,5	33	25	18,5	323 m			
		t	2,5	2,5	1,3	5	5	2,6						
40 LVF 13 (GH)	m/min	5	13	41	61	81,5	2,45	6,5	20,4	30,6	40,8	40	30	360 m
	t	2,5	2,5	2,5	1,9	1,25	5	5	5	3,75	2,5			
	4 D3 V3	m/min	15 → 30 → 58									4	3	
	RCV 60	rpm	0 → 0,8									8	5,8	
	ZF TVD 324 C1	m/min	12,5 → 25									2 x 7	2 x 5,2	

CEI 38  IEC 38	
400 V (+10% -10%) 50 Hz	25 PC 13 : 30 kVA 40 LVF 13 : 42 kVA

480 V - 60 Hz													hp	kW 
	25 PC 13 (GH)	m/min	10,5	42,5	85	5,3	212	42,5	30	22,1	360 m			
		t	2,5	2,5	1,3	5	5	2,6						
	25 PC 13	m/min	7,9	39,6	79,2	3,9	19,8	39,6	30	22,1	323 m			
		t	2,5	2,5	1,3	5	5	2,5						
40 LVF 13 (GH)	m/min	5	13	41	61	81,5	2,45	6,5	20,4	30,6	40,8	40	30	360 m
	t	2,5	2,5	2,5	1,9	1,25	5	5	5	3,75	2,5			
	4 D3 V3	m/min	18 → 39 → 70									4,8	3,6	
	RCV 60	rpm	0 → 0,96									9,6	7	
	ZF TVD 324 C1	m/min	15 → 30									2 x 8,4	2 x 6,2	

CEI 38  IEC 38	
480 V (+6% -10%) 60 Hz	25 PC 13 : 36 kVA 40 LVF 13 : 50 kVA