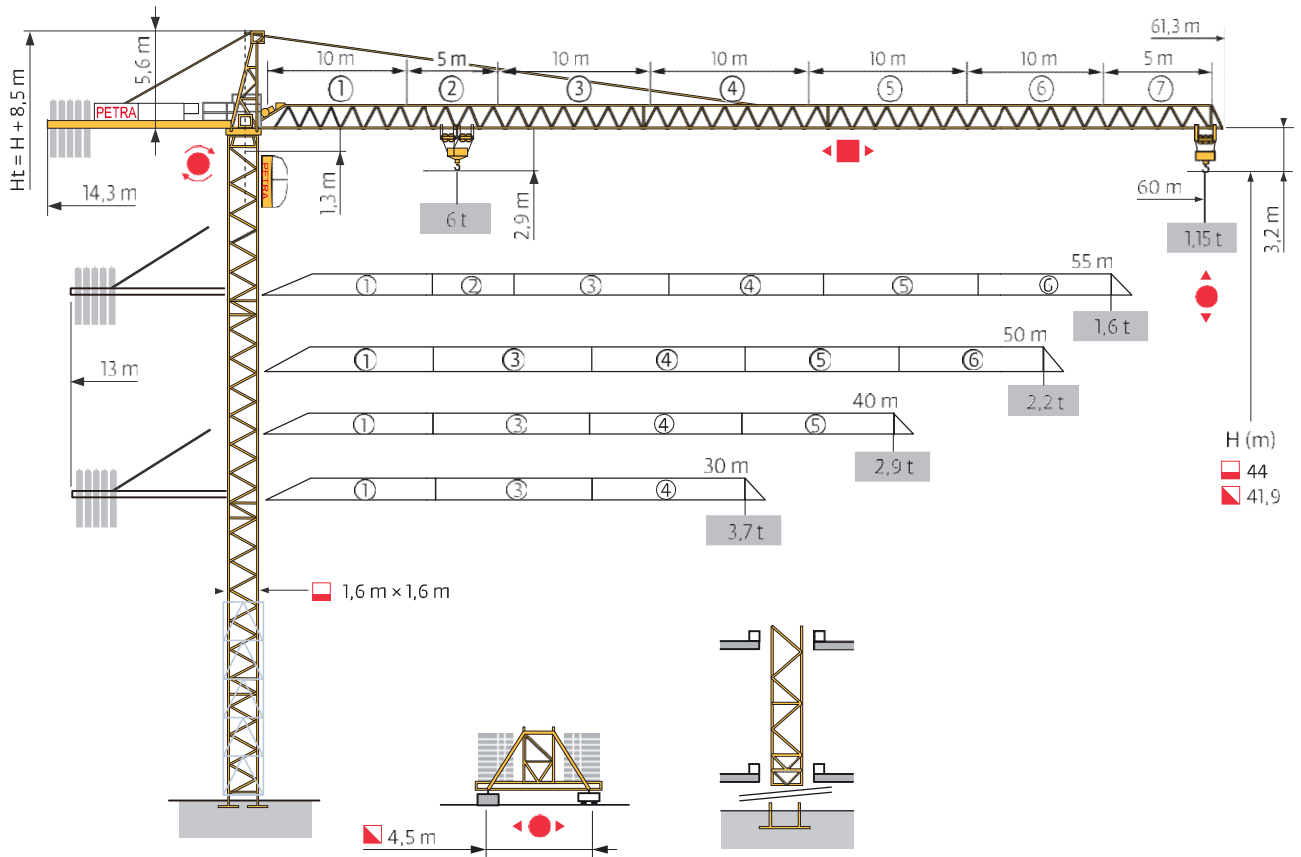
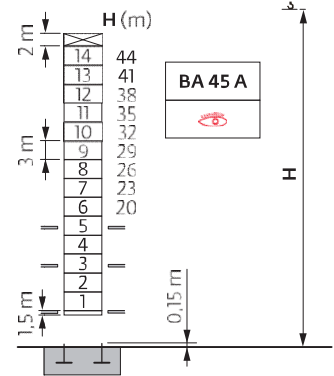
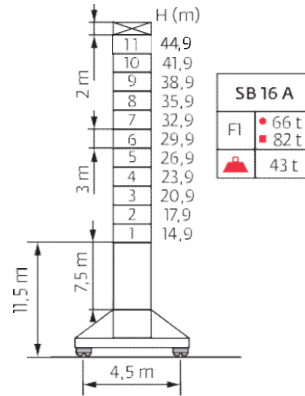
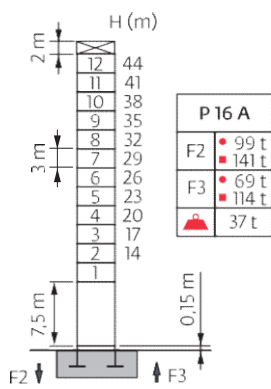


## PETRA MODEL PT 6015/6

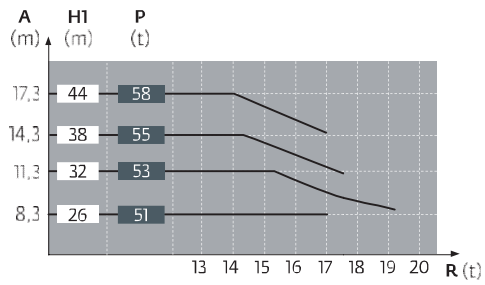
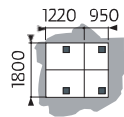
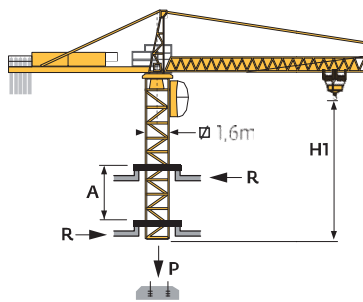


Mât - Réactions / Mast - Reaktionskräfte / Mast - Reactions / Mástil - Reacciones / Torre - Reazioni  
 Tramo - Reacções / Реакция опор мачты

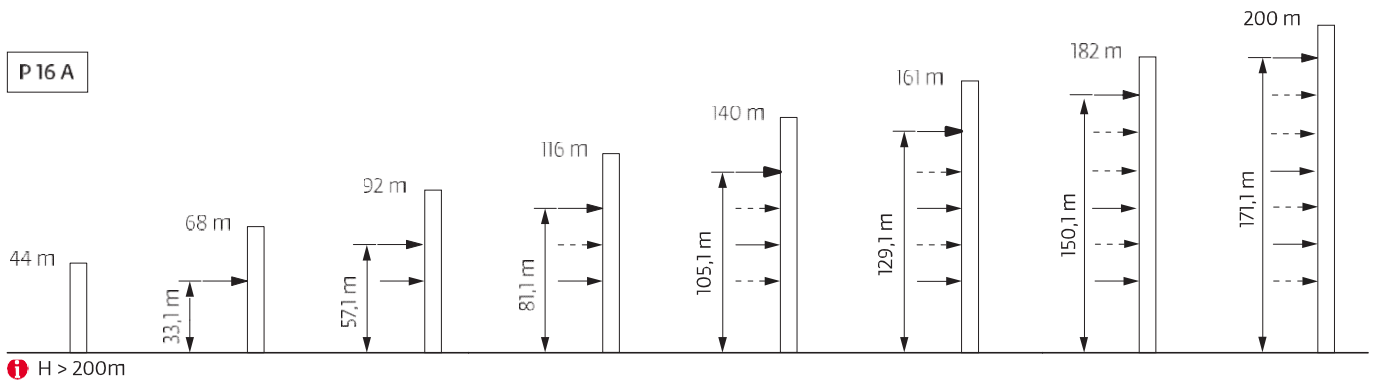
□ 1,6 m  
 ▲▲▲ 30 m → 60 m



Télescopage sur dalles / Kletterkrane im Gebäude / Climbing Crane / Telescopage grua trepadora / Gru in cavedio  
 Telescopagem sobre lages / Кран, ползущий внутри здания



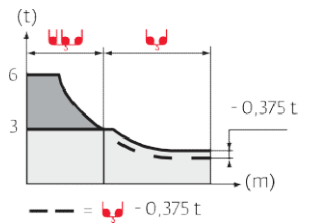
Ancrages / Verankerungen / Anchorages / Anclajes / Ancoraggi  
 Ancoragem / Анкера




Courbes de charges / Lastkurven / Load curves / Curvas de cargas / Curve di carico  
 Curvas de carga / Кривые нагрузок





60 m	3,1	▶	14,7	17	19	20	21	24	25,6	28,2	33	35	38	39	40	43	46	49	50	53	55	57	60	m
▲▼▲▼			6,0	5,0	4,4	4,1	3,9	3,3	3,0	3,0	2,5	2,3	2,1	2,05	1,95	1,8	1,65	1,5	1,45	1,35	1,3	1,25	1,15	t
55 m	3,1	▶	17,1	19	20	21	24	27	29,9	33	35	38	39	40	43	46	49	50	53	55				m
▲▼▲▼			6,0	5,3	5,0	4,7	4,0	3,4	3,0	3,0	2,8	2,55	2,45	2,4	2,2	2,0	1,85	1,8	1,7	1,6				t
50 m	3,1	▶	20	21	24	27	30	33	34,9	38,6	39	40	43	46	49	50								m
▲▼▲▼			6	5,6	4,8	4,2	3,6	3,2	3,0	3,0	2,95	2,9	2,65	2,45	2,25	2,2								t
40 m	3,1	▶	20,1	21	24	27	30	33	35	35,1	38,9	40												m
▲▼▲▼			6,0	5,7	4,8	4,2	3,7	3,3	3,0	3,0	3,0	2,9												t
30 m	3,1	▶	20,2	21	24	27	30																	m
▲▼▲▼			6,0	5,7	4,9	4,2	3,7																	t





Lest de base / Grundballast / Base ballast / Lastre de base / Zavorra di base  
 Lastro da base / Базовый Балласт

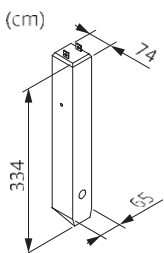
 1,6 m	<b>SB 16 A</b> 	H (m)  (t)	41,9	38,9	35,9	32,9	29,9	26,9	23,9	20,9	17,9	14,9
			78	66	66	60	60	60	54	54	54	54

Lest de contre-flèche / Gegenauslegerballast / Counter-jib ballast / Lastre de contra-flecha / Zavorra di controbraccio  
 Lastro da contra lança / Противовес стрелы

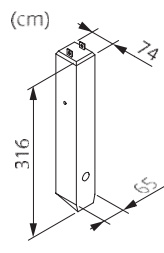
	3450 kg	2250 kg	 (kg)
60 m	5	0	17 250
55 m	-	-	-
50 m	4	1	16 050
40 m	4	0	13 800
30 m	2	2	11 400

	3700 kg	2250 kg	 (kg)
60 m	4	1	17 050
55 m	5	0	18 500
50 m	4	1	17 050
40 m	2	3	14 150
30 m	2	2	11 900

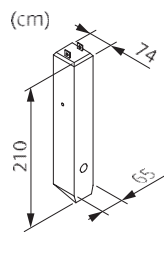
CCB - 3700 kg



CD - 3450 kg





CE - 2250 kg



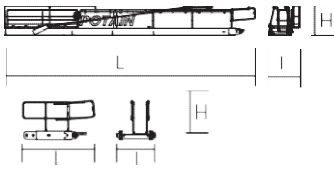
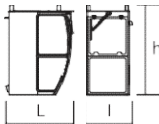
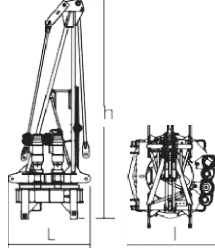
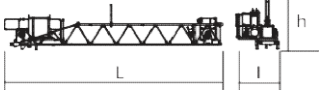
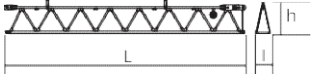
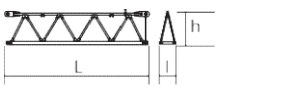
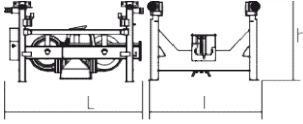
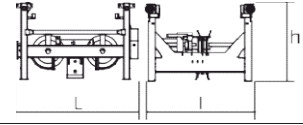
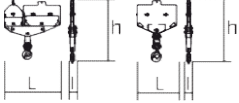
Encombremet et poids / Abmessungen und Gewicht / Dimensions and weight / Dimensiones y peso / Ingombro e peso  
dimensões e pesos / габаритные размеры и вес


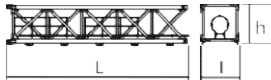
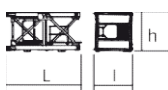
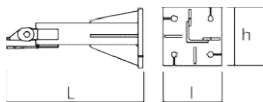
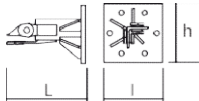
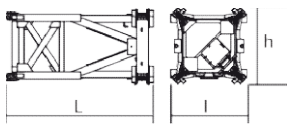
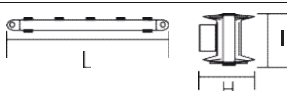
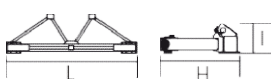
Partie tournante / Drehender Kranteil / Slewing crane part / Parte giratoria

Parte rotante / Parte rotativa / Поворотная часть :  60 m -  -  -  33 PC15 / 40 LVF15









 x 3



 x 3









Partie tournante / Drehender Kranteil / Slewing crane part Parte giratoria / Parte rotante / Parte rotativa Поворотная часть	L (m)	l (m)	h (m)	kg (+/-5%)
Contre-flèche / Gegenausleger Counter-jib / Contra-flecha Controbraccio / Contra-lança Контр-стрела 	11,94	1,46	1,40	2215
	1,68	1,17	0,26	370
cabine / Kabine cab / cabina cabina / cabina кабина 	1,675	1,175	2,305	385
Porte-flèche / Auslegerträger Cathead / Porta-flecha Cuspide / Suporte de lança Оголовок 	2,365	1,920	6,965	4680
			∅1,6 m RCV145	
Élément de flèche / Auslegerelement Jib section / Elemento de flecha Elemento di braccio / Elemento de lança Секция стрелы 	10,12	1,30	1,16	3200
	10,12	1,30	1,16	3200
Élément de flèche / Auslegerelement Jib section / Elemento de flecha Elemento di braccio / Elemento de lança Секция стрелы 	10,20	1,10	1,30	1125
	10,30	1,10	1,30	1275
	10,30	1,10	1,30	815
	10,30	1,10	1,30	525
Élément de flèche / Auslegerelement Jib section / Elemento de flecha Elemento di braccio / Elemento de lança Секция стрелы 	5,20	1,10	1,30	620
	5,20	1,10	1,30	245
Chariot / Laufkatze Trolley / Carrello Carro / Carro-distribuidor Тележка 	1,60	1,40	1,00	269
			6t	
Chariot / Laufkatze Trolley / Carrello Carro / Carro-distribuidor Тележка 	1,50	1,40	1,00	289
			6t	
	1,50	1,40	1,00	262
			3t	
Moufle / Hubflasche Pulley block / Aparejo Bozzello / Cadernal Полиспаст 	1,30	0,30	1,55	330
			6t	
	0,78	0,30	1,55	114
			3t	



<b>Equipement de télescage / Teleskopierausrüstung / Telescoping equipment</b> <b>Equipo de telescopaje / Equipaggiamento di telescopaggio / Equipamento de telescopagem</b> <b>Оборудование для телескопирования</b>	L (m)	l (m)	h (m)	kg (+/- 5%)	
Cage de télescage / Teleskopwagen Telescopic cage / Jaula de telescopaje Gabbia di telescopaggio / Gaiola de telescopagem для телескопирования крана 	∅1,6 m	6,80	3,65	3,90	3430
<b>Mâtire / Mastwerk / Masts</b> <b>Mástil / Torre / Coluna</b> <b>Мачты</b>					
S 46 J 	∅1,6 m	7,80	1,80	1,70	2520
S 44 AI L 44 AI S 46 AI L 46 AI 	∅1,6 m ∅1,6 m ∅1,6 m ∅1,6 m	3,50 3,50 3,50 3,50	1,80 1,80 1,80 1,80	1,70 1,70 1,70 1,70	1020 1080 1199 1224
<b>Bases / Kranbasen / Crane bases</b> <b>Bases / Basi / Bases</b> <b>фундамент под кран</b>					
Pieds de scellement / VerankerungsfüÙe Fixing angles / Pie de empotramiento Montante da annegare / Angulos fixadores анкера 	P 16 A	1,135	0,490	0,490	185
		0,685	0,500	0,500	145
Mat-chassis / Grundmasteinheit Basic mast unit / Tramo-chassis Elemento base / Tramo-chassis Мачта для крепления к шасси 		3,61	2,065	1,96	2750
Haubans / Mastabstützungen Struts / Tornapuntas Puntoni / Escoras Растяжка 		3,180	0,250	0,240	200
Sommier / Unterwagenhälfte Half-bearer / Testero Testata / Estrutura base Траверса 		5,080	1,785	0,605	1100






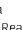
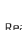












Mécanismes / Triebwerke / Mechanisms / Mecanismos / Meccanismi  
 Mecanismos / Механизмы

400 V - 50 Hz									hp	kW					
	33 PC 15 (GH)	m/min	10	40	80	5	20	40	33	24	400 m				
		t	3	3	1,5	6	6	3							
	40 LVF 15 (GH)	m/min	5	14	42	64	85	3	7	21	32	42,5	40	30	400 m
		t	3	3	3	2,25	1,5	6	6	6	4,5	3			
	4 D3 V3	m/min	15 → 30 → 58						4	3					
	RCV145	tr/min	0 → 0,8						2 x 6	2 x 4,4					
	RT 324 C1	m/min	12,5 → 25						2 x 7	2 x 5,2					

 IEC 60204-32	 kVA
400 V (+10% -10%) 50 Hz	33 PC : 50 KVA 40 LVF : 50 KVA

480 V - 60 Hz									hp	kW					
	33 PC 15 (GH)	m/min	12	48	96	6	24	48	39,6	28,8	400 m				
		t	3	3	1,5	6	6	3							
	40 LVF 15 (GH)	m/min	5	14	42	64	85	3	7	21	32	42,5	40	30	400 m
		t	3	3	3	2,25	1,5	6	6	6	4,5	3			
	4 D3 V3	m/min	18 → 36 → 69,6						4,8	3,6					
	RCV145	tr/min	0 → 0,96						2 x 7,2	2 x 5,28					
	RT 324 C1	m/min	15 → 30						2 x 8,4	2 x 6,24					

 IEC 60204-32	 kVA
480 V (+6% -10%) 60 Hz	33 PC : 60 KVA 40 LVF : 50 KVA

	FR	DE	EN	ES	IT	PT	RU
	 <b>Appel de flèche</b> Réactions en service	 <b>Auslegerüberhöhung</b> Reaktionskräfte in Betrieb	 <b>Jib elevation</b> Reactions in service	 <b>Elevación de la flecha</b> Reacciones en servicio	 <b>Inclinazione braccio</b> Reazioni in servizio	 <b>Desvio da lança</b> Reacções em serviço	 <b>подъем стрелы</b> Реакция при работе
	<b>Réactions hors service</b> A vide sans lest avec flèche et hauteur maximum	<b>Reaktionskräfte außer Betrieb</b> Gewicht ohne Last, ohne Ballast, mit Ausleger und max. Höhe	<b>Reactions out of service</b> Weight without load, without Ballast, with jib and max. height	<b>Reacciones fuera de servicio</b> Peso en vacío sin lastre, con flecha y altura máxima	<b>Reazioni fuori servizio</b> Peso a vuoto, senza zavorra, con braccio e altezza massimi.	<b>Reacções fora de serviço</b> Peso em vazio sem lastro, com lança e altura máxima.	<b>Реакция в покое</b> Вес пустого, без балласта, со стрелой, максимальной высоты.
	<b>Poids total du lest</b> Camion 13,4 m	<b>Ballast-Gesamtgewicht</b> Lkw 13,4 m	<b>Total ballast weight</b> Lorry 13,4 m	<b>Peso total del lastre</b> Camión 13,4 m	<b>Peso totale della zavorra</b> Camion 13,4 m	<b>Peso total do lastro</b> Camião 13,4 m	<b>Общий вес балласта</b> Ргрузовой автомобиль 13,4 м
	<b>Conteneur High Cube 40"</b>	<b>Container High Cube 40"</b>	<b>Container High Cube 40"</b>	<b>Contenedor High cube 40"</b>	<b>Container High Cube 40"</b>	<b>Contentor 40"</b>	<b>Контейнер повышенной вместимости длиной 40"</b>
	<b>Cadre d'ancrage serré</b>	<b>Fester Verankerungsrahmen</b>	<b>Tightened anchorage frame</b>	<b>Marco de anclaje de apriete</b>	<b>Quadro di ancoraggio stretto</b>	<b>Quadro de amarração apertado</b>	<b>Прикрепленная анкерная рама</b>
	<b>Cadre d'ancrage desserré / Levage</b>	<b>Loose Verankerungsrahmen / Heben</b>	<b>Loosened anchorage frame / Hoisting</b>	<b>Marco de anclaje de desajuste / Elevación</b>	<b>Quadro di ancoraggio allentato / Sollevamento</b>	<b>Quadro de amarração solto / Elevação</b>	<b>Отсоединенная анкерная рама / Подъем</b>
	<b>Distribution</b>	<b>Katzfahren</b>	<b>Trolleying</b>	<b>Distribución</b>	<b>Distribuzione</b>	<b>Distribuição</b>	<b>Перемещение по стреле</b>
	<b>Orientation</b>	<b>Schwenken</b>	<b>Slewing</b>	<b>Orientación</b>	<b>Rotazione</b>	<b>Rotação</b>	<b>Поворот</b>
	<b>Translation</b>	<b>Kranfahren</b>	<b>Travelling</b>	<b>Traslación</b>	<b>Traslazione</b>	<b>Translação</b>	<b>Перемещение крана</b>
	<b>Puissance nominale</b>	<b>Nennleistung</b>	<b>Rated power</b>	<b>Potencia nominal</b>	<b>Potenza nominale</b>	<b>Potencia nominal</b>	<b>Номинальная мощность</b>
	<b>Voir l'élévage sur dalles</b> Nous consulter	<b>Siehe Kletterkran im Gebäude</b> Auf Anfrage	<b>See climbing crane</b> Consult us	<b>Vea grúa trepadora</b> Consultarnos	<b>Consultare gru in cavedio</b> Consultateci	<b>Ver telecspigagem sobre lajes</b> Consultar-nos	<b>См. кран, ползущий внутри здания</b> консультируйтесь у нас
	<b>Document commercial non contractuel.</b> Pour toute information technique se référer à la notice correspondante.	<b>Unverbindliches Vertriebsdokument.</b> Für technische Informationen, siehe die entsprechenden Anweisungen.	<b>This commercial document is not legally binding.</b> For any technical information, please refer to the corresponding instructions.	<b>Documento comercial no contractual.</b> Para cualquier información técnica, ver la noticia correspondiente.	<b>Documento commerciale non vincolante.</b> per tutte le informazioni tecniche fare riferimento al catalogo istruzioni.	<b>Documento comercial não contratual.</b> Para qualquer informação técnica complementar consultar as respectivas instruções.	<b>Этот коммерческий документ не является юридически обязательным.</b> Для получения технической информации, см. соответствующие инструкции.